

SAINT JUDE FOCUS

www.stjudeshrine.org.uk



News from the Shrine of Saint Jude - May/June 2025





WELCOME

WELCOME TO THE LATEST ISSUE of *Saint Jude Focus* - updating the friends of Saint Jude. The 'Saint Jude Focus' has been created to compliment the quarterly newsletter which is written by the Prior Provincial. The Focus includes extra information on future events and other interesting stories that friends of Saint Jude may find of interest.

In this edition, we reprint a reflection from our Chaplain, Paul de Groot, O.Carm, on hope. We also update our European friends on the changes to cheque and postal order donations. Finally, we reflect on the time three of us at the Shrine met Pope Francis and were able to give him our special statue based on the original by Adam Kossowski.

Please do come and see us whilst we celebrate being pilgrims of hope and our seventieth anniversary. We would love to meet you.

Matt



HOPE

2025 IS AN EXCITING YEAR FOR THE Shrine of Saint Jude.

First, the Shrine has been designated as a jubilee place of worship by the Archbishop of Southwark for the special jubilee 'Pilgrims of Hope'.

Secondly, later this year, we will be celebrating seventy years since our foundation by Fr. Elias Lynch, O.Carm.

This is certainly an exciting year for our favourite Apostle.

Please save the date for the Feast weekend and day later this year:

Feast of Saint Jude celebrations -
Saturday 25 October, Sunday 26
October and Tuesday 28 October
2025

All are welcome. Please visit:
www.stjudeshrine.org.uk or call
01795 539 214 to book a pilgrimage
or for more information.



Pope Francis

"... there is always a space in which the good seed can grow... trust God." - Pope Francis

THE BRITISH PROVINCE of Carmelites were deeply saddened to hear of the death of Pope Francis. We gave thanks for his faithful witness to the Gospel, his tireless advocacy for the poor and marginalised, and his deep commitment to peace, dialogue, and care for creation. His papacy was a profound source of inspiration and hope for the Church and the world.

We wanted to share with you the story when friars and I met him back in 2016.

Pope Francis had declared 2015 - 2016 the Holy Year of Mercy. The year focused on forgiveness, reconciliation, and compassion, with a particular emphasis on the importance of acts of kindness and service.

In 2016, we had just commissioned the statue of Saint Jude (pictured above in Francis's hand). These statues are copies of the beautiful statue of Saint Jude by Adam Kossowski. It depicts the saint holding a copy of his letter.

Some will say that it

was simply good luck, or others may sense a touch of heavenly intervention, but here's the story of how Pope Francis held our special statue.



That day, though Pope Francis had already met the VIPs in a line at the front, he decided to go and meet as many of the other pilgrims in the rest of the audience hall (which included the three of us from the British Province).

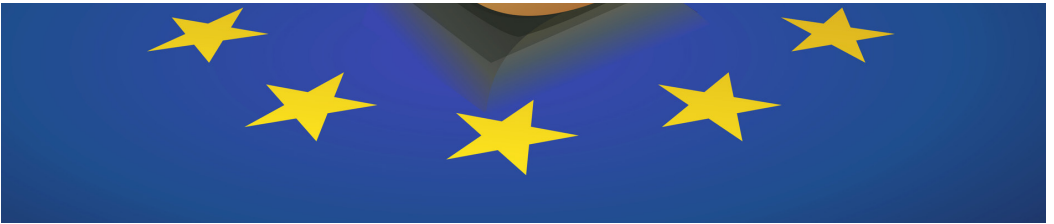
In the section that we were in, it was possible to hand him the statue of Saint Jude. The Pope gave a broad smile and asked, before taking it, 'Is that for me?'. Being reassured that it was, the Holy Father took the statue of Saint Jude in

his hands.

There are truly some rare moments in life where things just seem to happen the right way and this definitely was one of them.

May Pope Francis rest in peace and rise in glory!

Euro cheques and postal orders



Unfortunately, we have been advised by our bank (Royal Bank of Scotland) that from 9 June 2025 we can no longer accept any cheques or postal orders **under 50 euro**.

We are sorry that this has happened, but it is completely out of our hands.

We have so many friends in Europe and have a special relationship with so many of you. Historically too, we have had a long relationship with Ireland - our founder, Fr. Elias Lynch (along with two of his brothers) came from Ireland to reintroduce the Carmelite Order to the UK.

We hope that our friends in Ireland and the rest of Europe would still like to receive the newsletter and hear from us.

Please do not hesitate to call our team on +44 1795 539 214 if you have any questions or any concerns.

Frequently Asked Questions:

What has happened?

RBS have announced that they will no longer accept any cheques or postal orders **under 50 euro** from 9 June. However, we can still accept cheques/postal orders over that amount – and there are plenty of other alternative means of donating to us too.

How can you donate?

Though we can no longer accept cheques under 50 euro, you can still donate via bank transfer to our Euro bank account:

CARMELITE CHARITABLE TRUST

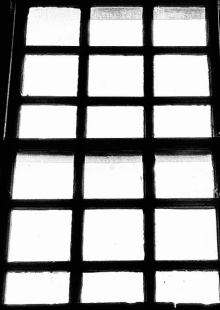
Account number:
15-20-25 CCTFF-EURA

BIC: RBOSGB2L

IBAN:
B59RBOS16107010055368

Or you can donate with a debit/credit card by phoning: +44 1795 539 214 or adding the details to our intentions sheet.

Thank you.



The Cell

A place of Hope and Encounter

WHERE WOULD YOU hope to encounter God?

Carmelite spirituality says that God is always sending us invitations to deepen our relationship with him and those invitations can come in many forms.

Through sacramental encounters of say Eucharist, or other church structures, through prayer or meditation, through encounters with others in the routine of daily life (the washing of pots and pans), through the wonderful, created world

that surrounds us.

The rule of Saint Albert which guides the Carmelite way of life, is short, with only 24 chapters and fitting onto an A4 page. Four of those chapters are concerned with the cell:

[6] Next, each one of you is to have a separate cell, situated as the lie of the land you propose to occupy may dictate, and allotted by disposition of the Prior with the agreement of the other brothers, or the more mature among them.

[8] None of the brothers is to occupy a cell other than that allotted to him, or to exchange cells with another, without leave of whoever is Prior at the time.

[9] The Prior's cell should stand near the entrance to your property, so that he may be the first to meet those who approach, and whatever has to be done in consequence may all be carried out as he may decide and order.

[10] Each one of you is to stay in his own cell or nearby, pondering

the Lord's law, day and night and keeping watch at his prayers unless attending to some other duty.

So, the cell is of some significance in enhancing our relationship with God.

It is a safe space, protected in some way from the outside world and from enhancement or betterment by changing it. Despite a communal lifestyle it is a place given as a private individual space not designated primarily for work or rest but for pondering the law of the Lord. The message God is trying to communicate to us.

For me, the word cell, is a strange word especially as a place of hope.

In an earlier reflection, a prison chaplain hinted that the cell was a place full of noise, made day and night, by unhappy individuals, trying to draw attention to their needs, of loneliness, frustration and fear. They fill the emptiness of their lives, hearts and minds with noise to forget. They think that external noise will absolve them from reflection and change, the transformation they crave.

Kees Waaijman, on the

other hand reflects on how Titus Brandsma, when he was detained in the Amersfoort concentration camp, gave an impressive witness. Deprived of his Carmelite lifestyle, he reinvented his Carmelite identity by rearranging his spatial-temporal habitat, his prison cell. By working in silence, he became holy, becoming more Carmelite in a very destructive and anti-religious situation. That thought is confirmed by a Third Order member in prison, who uses tapestry as a meditative way of coping.

So that a confining restrictive cell, a place of austerity, and isolation, can with the right attitude become a place of hope and transformation.

Edith Stein's cell of the heart is a place where the heart recuperates and re energises for the future.



A place where much of the time is spent asleep!

But the cell in the scientific sense is a place of immense activity. A cell is the fundamental building block of life, Cells provide structure and convert nutrients into energy. They are complex and they specialize into various functions (like nerve, brain, bone, muscle or blood) and in their various combinations provide all the richness and diversity that life on earth provides. The powerhouses which make us exist and function. A never-ending dynamism. A constant cycle of death, regeneration and activity.

The source of life and hope.

So perhaps for a Carmelite the cell is a place to take the gifts of the world, the daily experiences, the sorrows, the joys, the relationships and to reflect on what God is asking us to do.

But this routine, this rhythm, needs to allow for the unexpected, the surprise that God is always springing.

Who, for however long they pondered, whether in cell or not, could foresee that Friday's tragic events would lead to an empty tomb on Sunday and who expected that the absence of a body would lead to such an outpouring of energy and conviction about the Risen Christ?

A cell needs to be a place that enables recuperation, an integration of all that

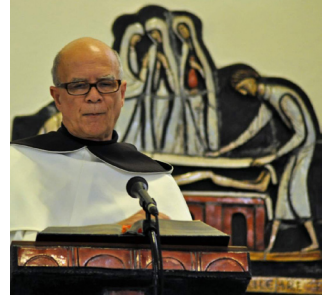
has happened, open to the unexpected and another way of seeing so that on leaving it, we can enable God's presence to be more clearly visible in the world.

To rebirth one small step at a time and so transform our world.

by Br. Paul de Groot, O.Carm

Br. Paul is Chaplain at the Shrine of Saint Jude and is a

Carmelite friar. This reflection was originally published on the Carmelite website in April 2025



May mercy, peace, and love be yours in abundance

Letter of Saint Jude, verse 2



There are so many ways to support us.

Here are just seven:

1. Join the Guild of Saint Jude
2. Purchase items on our eBay shop
3. Shop online via 'Give as you Live'
4. Donate stamps, printer cartridges, coins, books
5. Terracycle with us
6. Visit us and bring a friend
7. Pray for our work and team

Find out more:
stjudeshrine.org.uk/donate

Thank you


Remembering the Shrine and the Carmelites in your Will

Your legacy will help the Carmelite Charitable Trust and the Shrine of Saint Jude to ensure that the work and ministry of the province and the Shrine will continue for many generations to come.

It is thanks to so many of the legacies of the past that we have been able to continue our work, building God's Kingdom on earth even when your earthly life is over.

Please call 01795 539 214, scan the QR Code, or visit www.stjudeshrine.org.uk for more information.



 <https://tinyurl.com/JudeFB>

 <https://tinyurl.com/SkyJude>



 Carmelite Friars, PO Box 289, Faversham, ME13 3BZ

 01795 539 214

 newsletter@stjudeshrine.org.uk

 www.stjudeshrine.org.uk

Donate online: <https://www.stjudeshrine.org.uk/donate>

Online shop: <https://tinyurl.com/SaintJudeShop>



Please recycle or pass this communication on to a friend after you have finished reading it - thank you.



Registered Charity: No. 1061342

Front cover - Betts Park, Penge, photo taken by J. Cooper. Pages 2, 5, 6, 7, 8 © used with permission from istockphoto.com - all other photos © Carmelite Charitable Trust. istockphoto.com have all been purchased and are used with permission. Focus has been written, designed and edited by Mr. Matthew Betts. The Focus is correct at the time of printing. Contact the editor on: newsletter@stjudeshrine.org.uk.